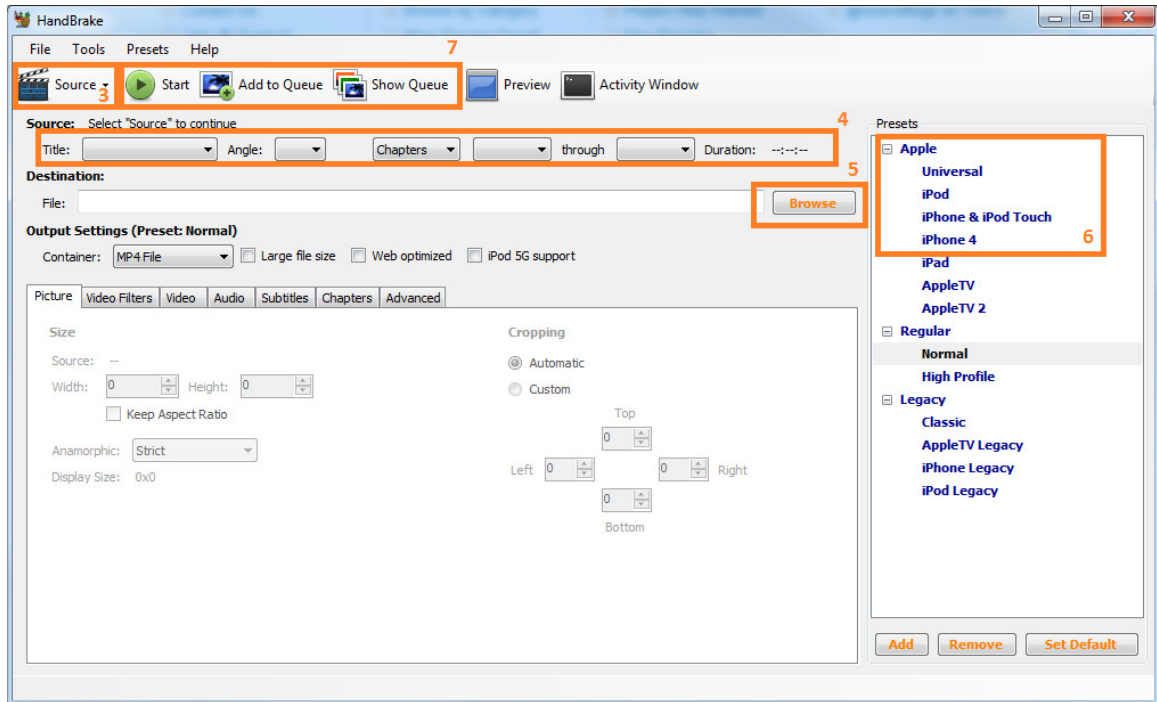


Handbrake GUI Quick Start Guide

1. Start Handbrake



2. Select a SOURCE file(#3):

Click the "Source" button which will give you 3 options.

- Video File : Use this if you plan on converting a video file. (e.g. a file that ends with .mp4, .wmv etc)
- Folder : Use this option to select a folder on the DVD Drive
- DVD Drive Option : If [HandBrake](#) detects a DVD movie in your drive, it'll show the name of the disc and you can simply select this option.
- Simply select the source or drive, and click the "OK" or "Open" buttons.

3. Setup OUTPUT file(#5):

- Click the "Browse" button in the Destination box.
- Browse to where you wish to save the output video.
- Type in a file name.
- Click "Save".

4. Click START(#7)