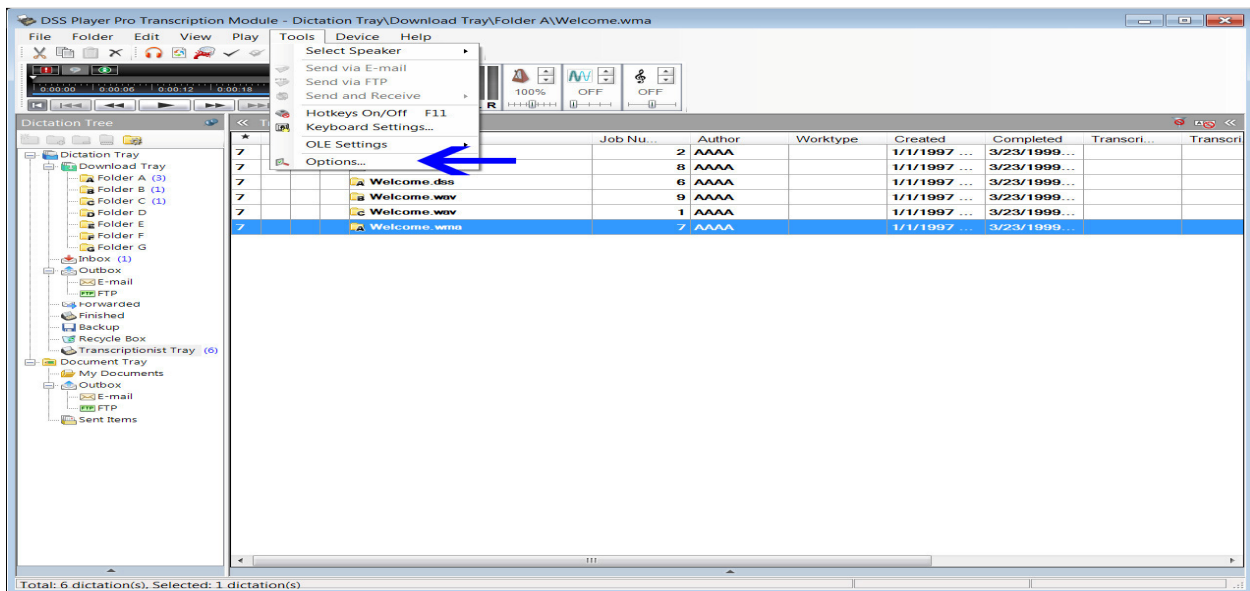




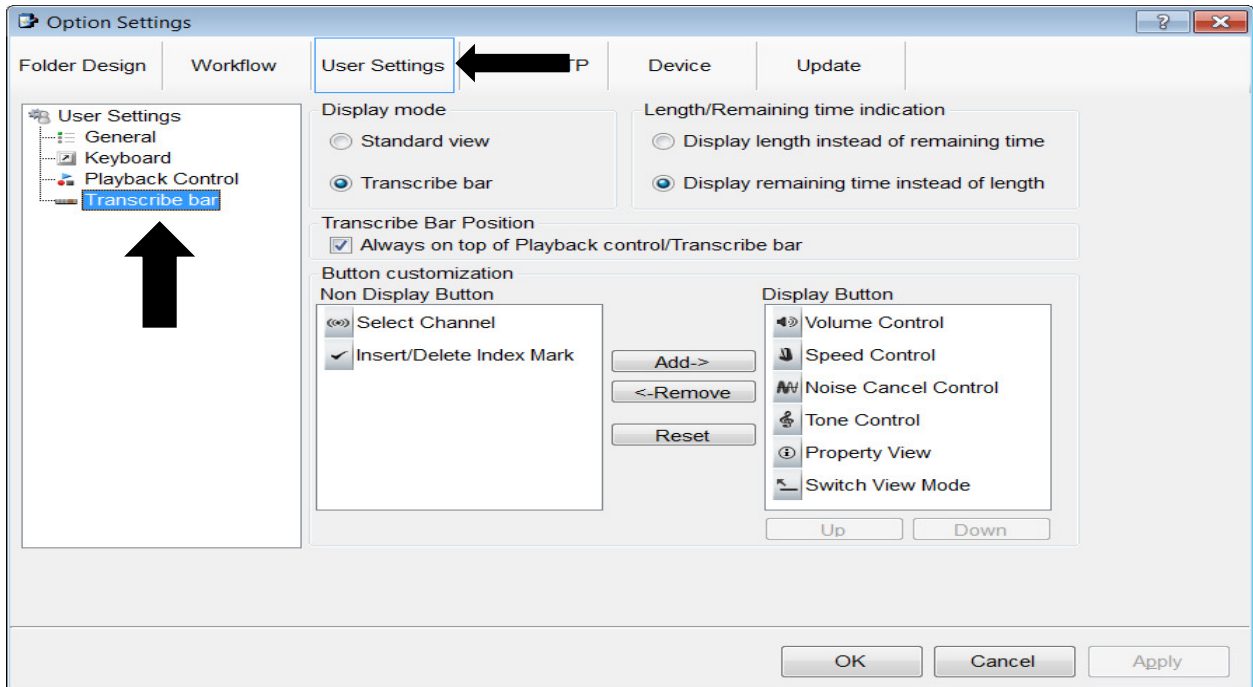
HTH Engineering, Inc.
825 Cypress Trails Dr.
Tarpon Springs, FL 34688
Tel: (727) 939 8853 Toll-Free (866) 254-0714
FAX (810) 821-6940
Web: <http://www.startstop.com>

Changing the Transcription Bar on the AS-5000

1. With the software open, click on Tools -> Options (blue arrow):



2. Click on Transcribe bar under User Settings:



In this Window you can change the way your Transcribe bar looks and acts:

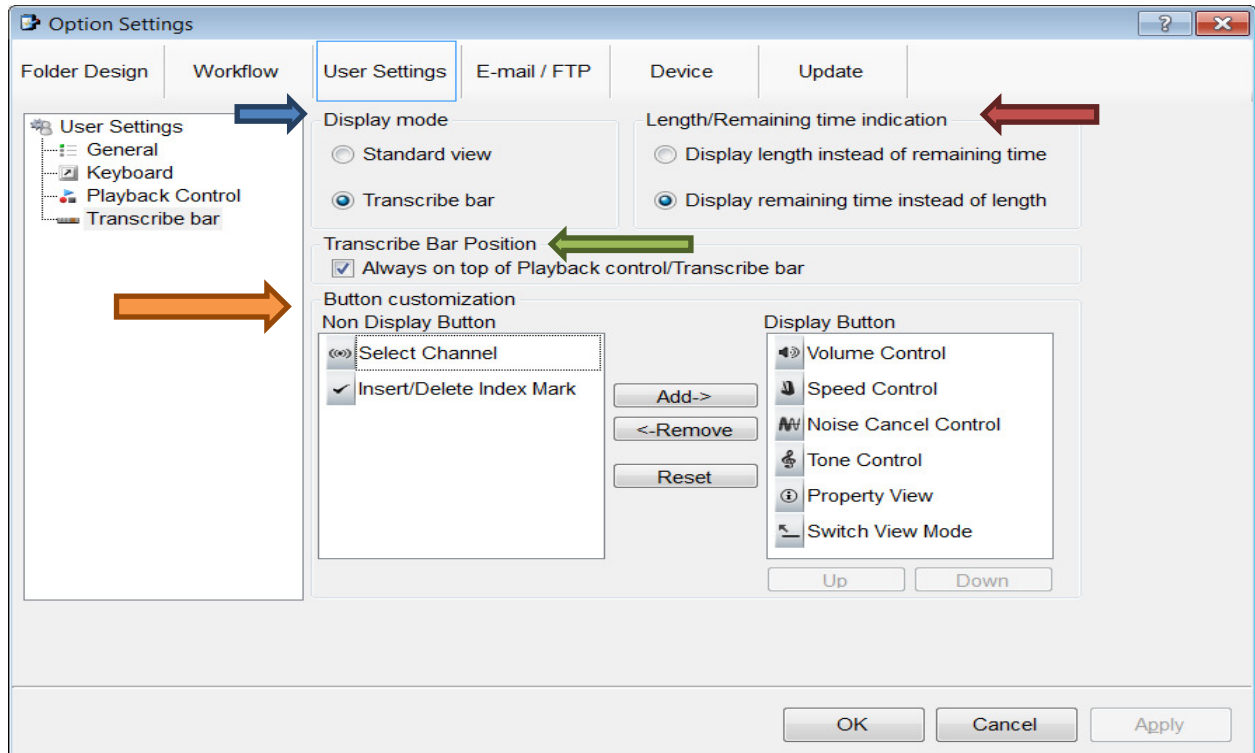


Figure 1 - Transcribe Bar settings

1. DISPLAY MODE (blue arrow) – choose STANDARD VIEW (Figure 2)

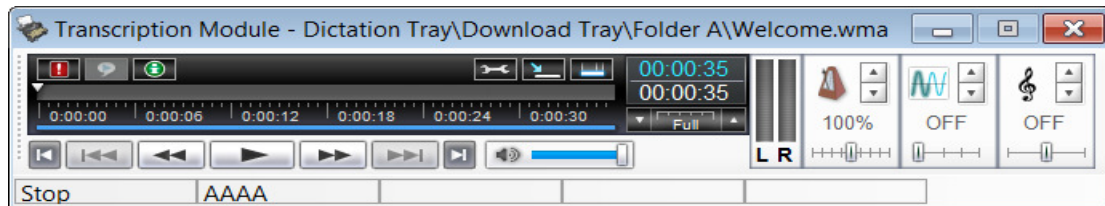


Figure 2 - STANDARD VIEW

Or Transcribe bar (Figure 3)



Figure 3 - TRANSCRIBE BAR (view)

2. Display different time settings by length of time left or total time of file. (red arrow)
3. Display Transcribe bar to always stay on top of all windows. (green arrow)
4. Customize what is shown on the Transcribe bar. (orange arrow)
 - Add\Remove\Reset Controls listed.